



PERRIS UNION HIGH SCHOOL DISTRICT

155 E. Fourth Street, Perris, CA 92570
951-943-6369

puhsd.org

[@puhsd](https://twitter.com/puhsd)

[f](https://www.facebook.com/PerrisUnionHSD) [i](https://www.instagram.com/PerrisUnionHSD) PerrisUnionHSD

Superintendent: Grant Bennett

Tonya Davis
Chief Human
Resources Officer

Marilyn Saucedo, Ed.D.
Assistant Superintendent
Educational Services

Candace Reines
Assistant Superintendent
Business Services

Joseph Williams
Executive Director
Technology

ADDENDUM NO. 1

Bid #052617 Heritage High School Flooring Replacement Project May 16, 2017

The following changes and/or additions to the Project Documents shall apply to bids made for and to the execution of the various parts of the work affected and all other conditions shall remain the same.

Careful note of the Addendum shall be taken by all bidders so that the proper allowances may be made in strict accordance with the addendum.

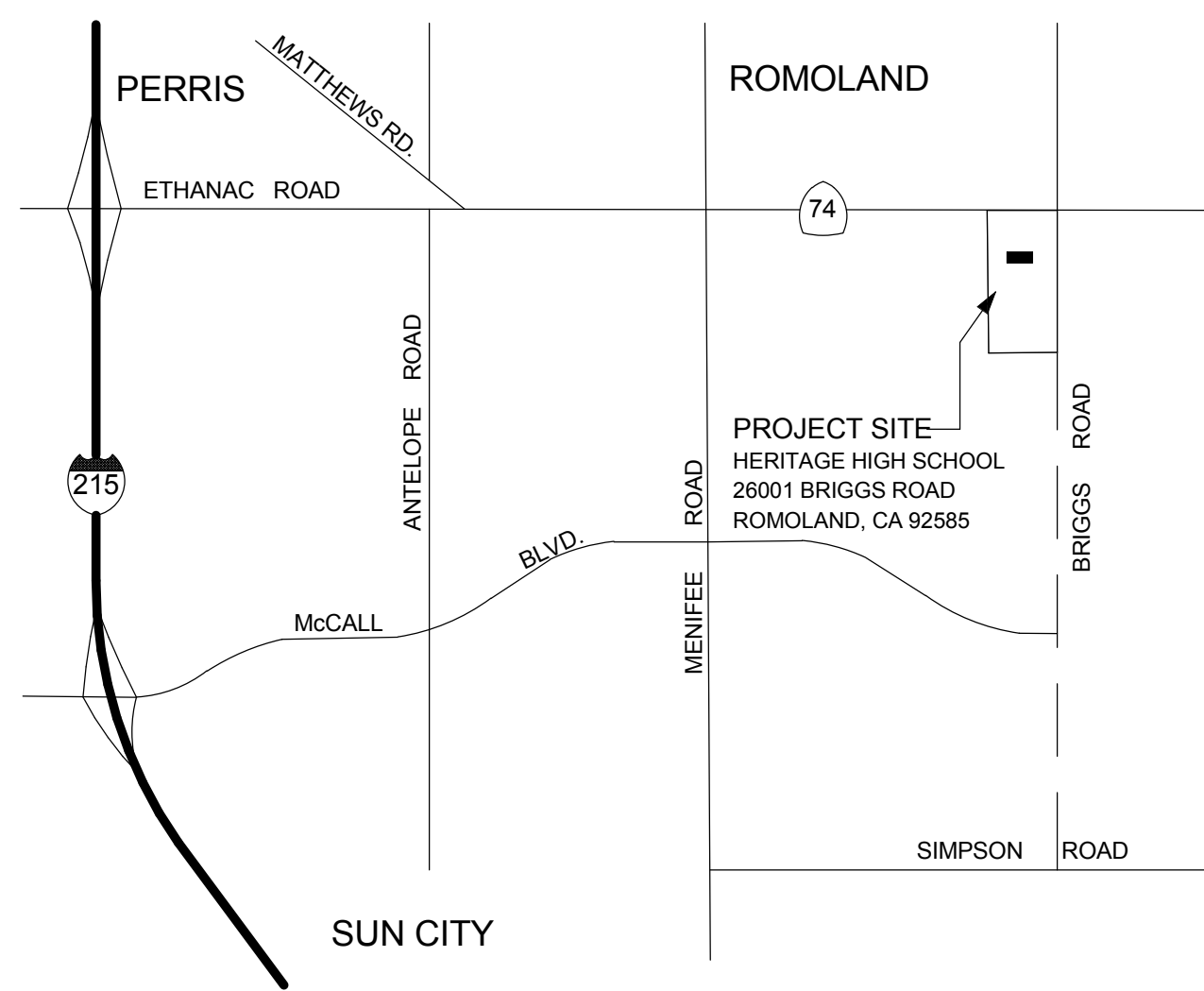
Bidder shall acknowledge receipt of this Addendum in the space provided on the Bid Form. Failure to do so will subject the Bidder to disqualification.

In case of conflict between Project Documents and this Addendum, this Addendum shall govern.

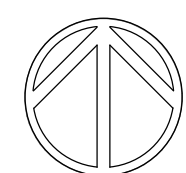
Item #1 – Site Drawings for Project - attached

Respectfully,

Nick Newkirk, Director of Purchasing
nick.newkirk@puhsd.org



VICINITY MAP



NOT TO SCALE

HERITAGE HIGH SCHOOL FLOOR REPLACEMENT

PERRIS UNION HIGH SCHOOL DISTRICT

PROJECT NUMBER: PUSHD.17.01

PROJECT NAME

PERRIS UNION HIGH SCHOOL DISTRICT

155 E. 4TH STREET
PERRIS, CA 92570
(T) 951.943.6369
(F) 951.940.5301

PJHM ARCHITECTS, INC.

IN ORANGE COUNTY

24461 RIDGE ROUTE DRIVE #100
LAGUNA HILLS, CA 92653

(T) 949.496.6191
(F) 949.916.4887

IN SAN DIEGO COUNTY

804 PIER VIEW WAY #103
OCEANSIDE, CA 92054

(T) 760.730.5527
(F) 760.730.562

IN LOS ANGELES COUNTY OFFICE

837 TRACTION AVENUE #410
LOS ANGELES, CA 90013

(T) 949.496.6191
(F) 949.496.0269

| | |
|---------------|--|
| CS | COVER SHEET |
| ARCHITECTURAL | |
| A101 | BUILDING A (KENNEDY) FLOOR PLAN & SCHEDULE |
| A102 | BUILDING B (REAGAN) FLOOR PLAN & SCHEDULE |
| A103 | BUILDING C (JEFFERSON) & BUILDING D (WASHINGTON) FLOOR PLAN & SCHEDULE |
| A104 | BUILDING E (LINCOLN) FLOOR PLAN & SCHEDULE |

OWNER

SUPERINTENDENT

GRANT BENNETT

BOARD

DR. JOSE LUIS ARAUX, PRESIDENT

DAVID NELISSEN, VICE PRESIDENT

CAROLYN TWYMAN, CLERK

EDWARD GARCIA, MEMBER

ANTHONY T. STAFFORD SR., MEMBER

ARCHITECT

2013 CALIFORNIA ADMINISTRATIVE CODE PART 1, TITLE 24, C.C.R.

2013 CALIFORNIA BUILDING CODE (CBC), PART 2, TITLE 24, C.C.R.
(2012 INTERNATIONAL BUILDING CODE VOLUMES 1-2 AND 2013 CALIFORNIA AMENDMENTS)

2013 CALIFORNIA GREEN BUILDING STANDARDS CODE, PART 11, TITLE 24 C.C.R.
2013 CALIFORNIA REFERENCED STANDARDS, PART 12, TITLE 24 C.C.R.
TITLE 19 C.C.R., PUBLIC SAFETY, STATE FIRE MARSHAL REGULATIONS

GOVERNING BOARD

- REPLACE VINYL COMPOSITION TILE (V.C.T.), CARPET AND TOP SET BASE MATERIAL IN FIRST LEVEL SPACES ONLY. (SECOND FLOOR IS N.I.C.). ALL NEW FLOORING MATERIAL TO BE APPLIED OVER A MOISTURE MITIGATION SYSTEM. ALL V.C.T., CARPET AND BASE MATERIAL WILL BE SUPPLIED BY THE OWNER. V.C.T. COLORS AND PATTERNS MAY BE FOUND IN SPECIFICATION SECTION 09 65 00.
- AS PART OF THE BASE BID, THE CONTRACTOR IS REQUIRED TO REMOVE AND REPLACE ALL FURNITURE AND EQUIPMENT AS REQUIRED TO INSTALL NEW FLOORING SYSTEM. STORAGE SPACE AVAILABILITY FOR FURNITURE AND EQUIPMENT IS ON SITE BUT MUST BE CONFIRMED BY DISTRICT.
- IMPORTANT!!** REFERENCE THE PROJECT SCHEDULE IN SECTION 00 11 16, NOTICE INVITING BIDS. IT DEFINES "WINDOWS OF OPPORTUNITY" TO COMPLETE ALL CONTRACTUAL WORK. AT THE END OF EACH "WINDOW" THE CONTRACTOR MUST:
 - ALL FURNITURE AND EQUIPMENT BE BACK IN PLACE
 - CLEANING OF ALL ROOMS AFFECTED BY THE WORK
 - APPLICATION OF DISTRICT SUPPLIED FLOOR SEALER (ONE COAT) AND WAX (TWO COATS) TO NEWLY INSTALLED VINYL COMPOSITION TILE

- ALL WORK SHOULD CONFORM TO 2013 TITLE 24, CALIFORNIA CODE OF REGULATIONS (C.C.R.)
- THE ARCHITECT OR ENGINEER MAY FIND DEFECTS IN THE WORK, AND IF THEY DO, THEY WILL NOTIFY THE CONTRACTOR SO THE ERROR MAY BE CORRECTED. UNDER NO CIRCUMSTANCES IS IT EVER THE INTENT FOR THE ARCHITECT OR ENGINEER TO BECOME A GUARANTOR OF THE CONTRACTOR'S PERFORMANCE BY THESE ACTIVITIES. THE FACT THAT A CONTRACTOR'S ERROR GOES UNDETECTED DURING THE VISIT TO THE SITE DOES NOT MAKE THE ARCHITECT OR ENGINEER NEGLIGENT; THE CONTRACTOR IS NEVER RELIEVED OF THE RESPONSIBILITY FOR THE DISCOVERY OF HIS OWN ERRORS AND THE CORRECTION OF THEM, NOR OF THE RESPONSIBILITY OF PROPERLY PERFORMING THE WORK.
- DO NOT SCALE DRAWINGS. WORK TO THE DIMENSIONS INDICATED ON THE DRAWINGS. CONTRACTOR SHALL VERIFY THE DIMENSIONS AT THE JOB SITE AND NOTIFY THE ARCHITECT OF ANY DISCREPANCIES FOR PROMPT CLARIFICATION.
- THE CONTRACTOR SHALL PROTECT ADJACENT PROPERTY AND STRUCTURES. ANY DAMAGE SHALL BE PROMPTLY RESTORED TO THE SATISFACTION OF THE OWNER/ARCHITECT, AT CONTRACTOR'S EXPENSE.
- BIDDERS ARE REQUIRED TO LOOK AT ALL DRAWINGS AND SPECIFICATIONS, NOT JUST THOSE SHEETS OR SECTIONS RESPECTIVE OF THEIR TRADE.
- ALL DETAILS CONTAINED IN THESE CONSTRUCTION DOCUMENTS ARE PART OF THE CONSTRUCTION SCOPE REGARDLESS OF THEM BEING REFERENCED IN THE SET.

GENERAL NOTES

PROJECT SCOPE

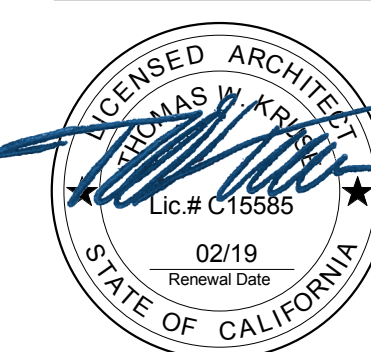
APPLICABLE CODES

SCHEDULE OF DRAWINGS

HERITAGE HIGH SCHOOL FLOOR REPLACEMENT

PERRIS UNION HIGH SCHOOL DISTRICT

COVER SHEET



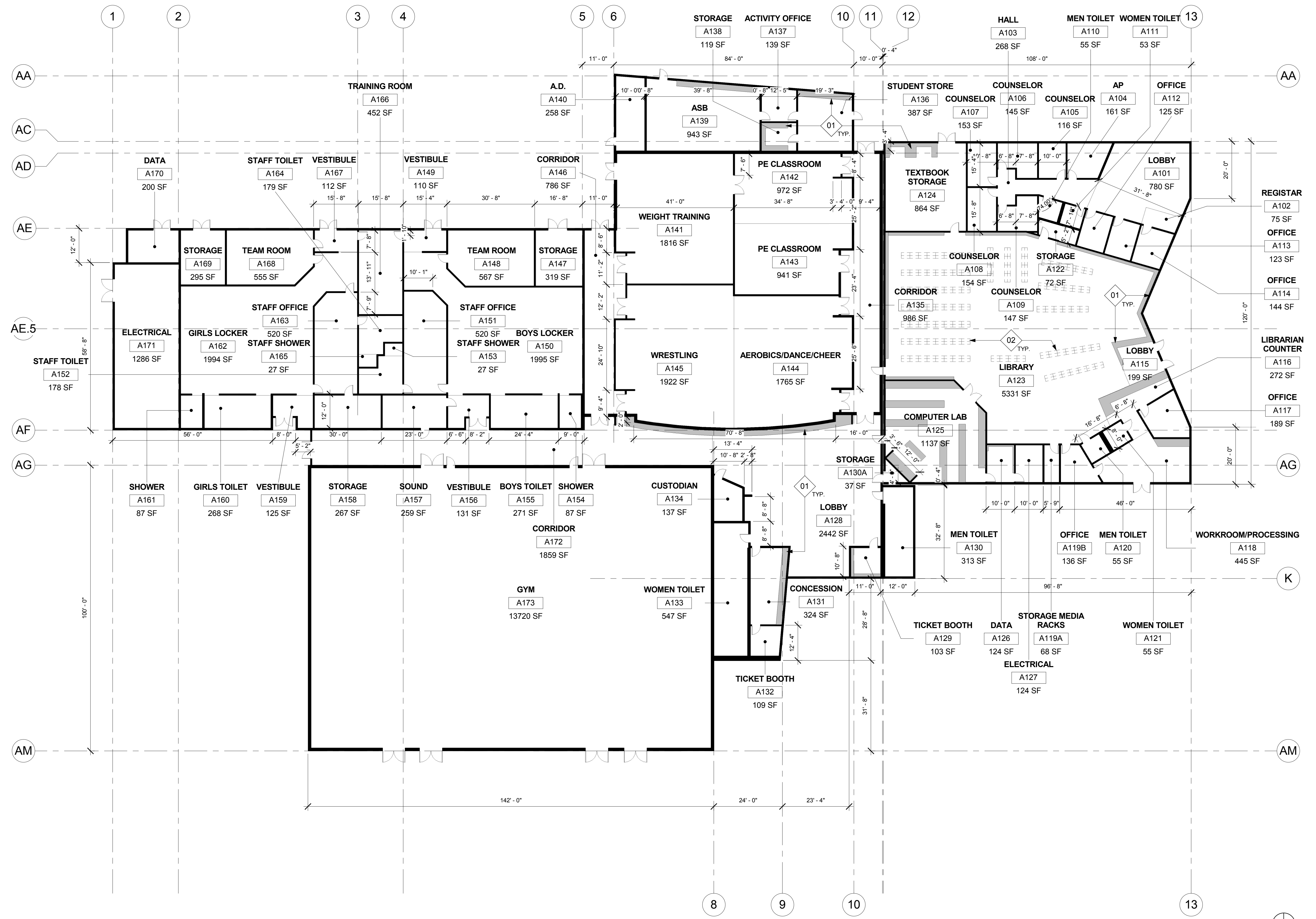
pjhm
architects

Phone: 760.730.5527, Fax 760.730.5627, Web: www.pjhm.com

San Diego Office: Address: 804 Pier View Way #103, Oceanside, CA 92054

Phone: 949.496.6191, Fax: 949.496.0269

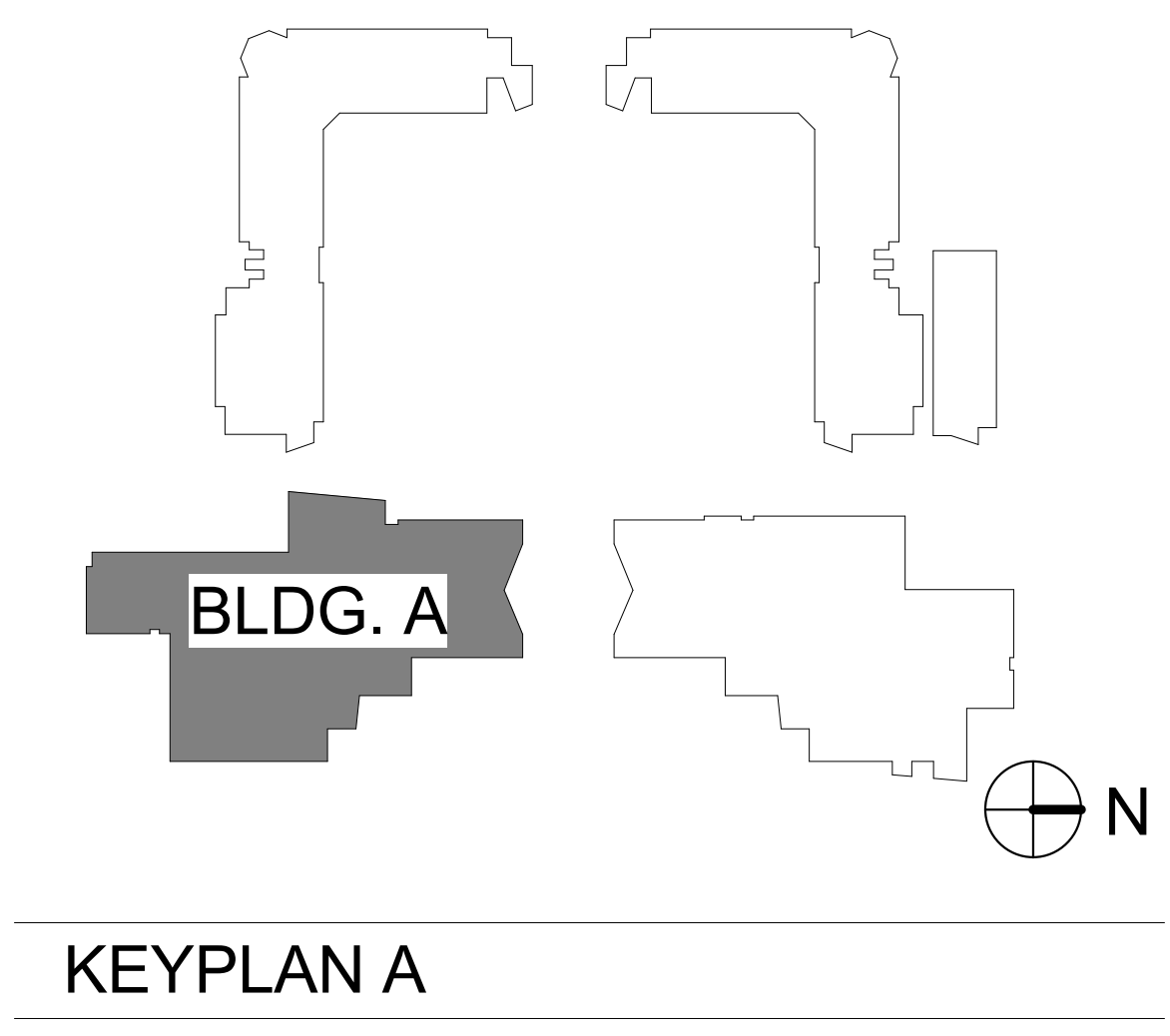
Orange County Office: Address: 24461 Ridge Route Drive #100, Laguna Hills, CA 92653



BUILDING A - KENNEDY - FIRST LEVEL
 FLOOR PLAN
 1/16" = 1'-0"

| BLDG A - FLOORING SCHEDULE | | | | |
|----------------------------|----------------------|------------------------|----------------|----------|
| ROOM NUMBER | ROOM NAME | FLOORING | | NOTE |
| | | VINYL COMPOSITION TILE | RESILIENT BASE | |
| A101 | LOBBY | - | - | 780 SF |
| A102 | REGISTRAR | - | - | 75 SF |
| A103 | HALL | - | - | 268 SF |
| A104 | AP | - | - | 161 SF |
| A105 | COUNSELOR | - | - | 116 SF |
| A106 | COUNSELOR | - | - | 145 SF |
| A107 | COUNSELOR | - | - | 153 SF |
| A108 | COUNSELOR | - | - | 154 SF |
| A109 | COUNSELOR | - | - | 147 SF |
| A110 | MEN TOILET | - | - | 55 SF |
| A111 | WOMEN TOILET | - | - | 53 SF |
| A112 | OFFICE | - | - | 125 SF |
| A113 | OFFICE | - | - | 123 SF |
| A114 | OFFICE | - | - | 144 SF |
| A115 | LOBBY | - | - | 199 SF |
| A116 | LIBRARIAN COUNTER | - | - | 272 SF |
| A117 | OFFICE | - | - | 189 SF |
| A118 | WORKROOM/PROCESSING | - | - | 445 SF |
| A119 | STORAGE MEDIA RACKS | - | - | 68 SF |
| A119B | OFFICE | - | - | 136 SF |
| A120 | MEN TOILET | - | - | 55 SF |
| A121 | WOMEN TOILET | - | - | 55 SF |
| A122 | STORAGE | - | - | 72 SF |
| A123 | LIBRARY | - | - | 5331 SF |
| A124 | TEXTBOOK STORAGE | - | - | 864 SF |
| A125 | COMPUTER LAB | - | - | 1137 SF |
| A126 | DATA | - | - | 124 SF |
| A127 | ELECTRICAL | - | - | 124 SF |
| A128 | LOBBY | - | - | 2442 SF |
| A129 | TICKET BOOTH | - | - | 103 SF |
| A130 | MEN TOILET | - | - | 313 SF |
| A131 | CONCESSION | - | - | 324 SF |
| A132 | TICKET BOOTH | - | - | 109 SF |
| A133 | WOMEN TOILET | - | - | 547 SF |
| A134 | CUSTODIAN | - | - | 137 SF |
| A135 | CORRIDOR | - | - | 986 SF |
| A136 | STUDENT STORE | - | - | 387 SF |
| A137 | ACTIVITY OFFICE | - | - | 139 SF |
| A138 | STORAGE | - | - | 119 SF |
| A139 | ASB | - | - | 943 SF |
| A140 | A.D. | - | - | 258 SF |
| A141 | WEIGHT TRAINING | - | - | 1816 SF |
| A142 | PE CLASSROOM | - | - | 972 SF |
| A143 | PE CLASSROOM | - | - | 941 SF |
| A144 | AEROBICS/DANCE/CHEER | - | - | 1765 SF |
| A145 | WRESTLING | - | - | 1922 SF |
| A146 | CORRIDOR | - | - | 786 SF |
| A147 | STORAGE | - | - | 319 SF |
| A148 | TEAM ROOM | - | - | 567 SF |
| A149 | VESTIBULE | - | - | 110 SF |
| A150 | BOYS LOCKER | - | - | 1995 SF |
| A151 | STAFF OFFICE | - | - | 520 SF |
| A152 | STAFF TOILET | - | - | 178 SF |
| A153 | STAFF SHOWER | - | - | 27 SF |
| A154 | SHOWER | - | - | 87 SF |
| A155 | BOYS TOILET | - | - | 271 SF |
| A156 | VESTIBULE | - | - | 131 SF |
| A157 | SOUND | - | - | 259 SF |
| A158 | STORAGE | - | - | 267 SF |
| A159 | VESTIBULE | - | - | 125 SF |
| A160 | GIRLS TOILET | - | - | 268 SF |
| A161 | SHOWER | - | - | 87 SF |
| A162 | GIRLS LOCKER | - | - | 1994 SF |
| A163 | STAFF OFFICE | - | - | 520 SF |
| A164 | STAFF TOILET | - | - | 179 SF |
| A165 | STAFF SHOWER | - | - | 27 SF |
| A166 | TRAINING ROOM | - | - | 452 SF |
| A167 | VESTIBULE | - | - | 112 SF |
| A168 | TEAM ROOM | - | - | 555 SF |
| A169 | STORAGE | - | - | 295 SF |
| A170 | DATA | - | - | 200 SF |
| A171 | ELECTRICAL | - | - | 1286 SF |
| A172 | CORRIDOR | - | - | 1859 SF |
| A173 | GYM | - | - | 13720 SF |

KEYNOTES:
 01: SHADING INDICATES EXTENT OF EXISTING CASEWORK. IF EXISTING CASEWORK HAS A RAISED TOE SPACE (APPROX. 3 TO 4 INCHES) FACE OF TOE KICK AND NEWLY INSTALLED TOP-SET BASE IS TO BE DRILLED WITH 1/2 INCHES DIA. HOLES AT 24 INCHES ON CENTER MID-HEIGHT OF TOE KICK FOR VENTILATION PURPOSES. FINISH NEW VENTILATION HOLES WITH A BLACK PLASTIC GROMMET ADHERED INTO PLACE(TYP).
 02: DASHED LINES INDICATE EXTENT OF LIBRARY SHELVING REMOVAL AND REPLACEMENT AS REQUIRED FOR NEW FLOORINGS AND VAPOR CONTROL SYSTEM INSTALLATION



KEYPLAN A

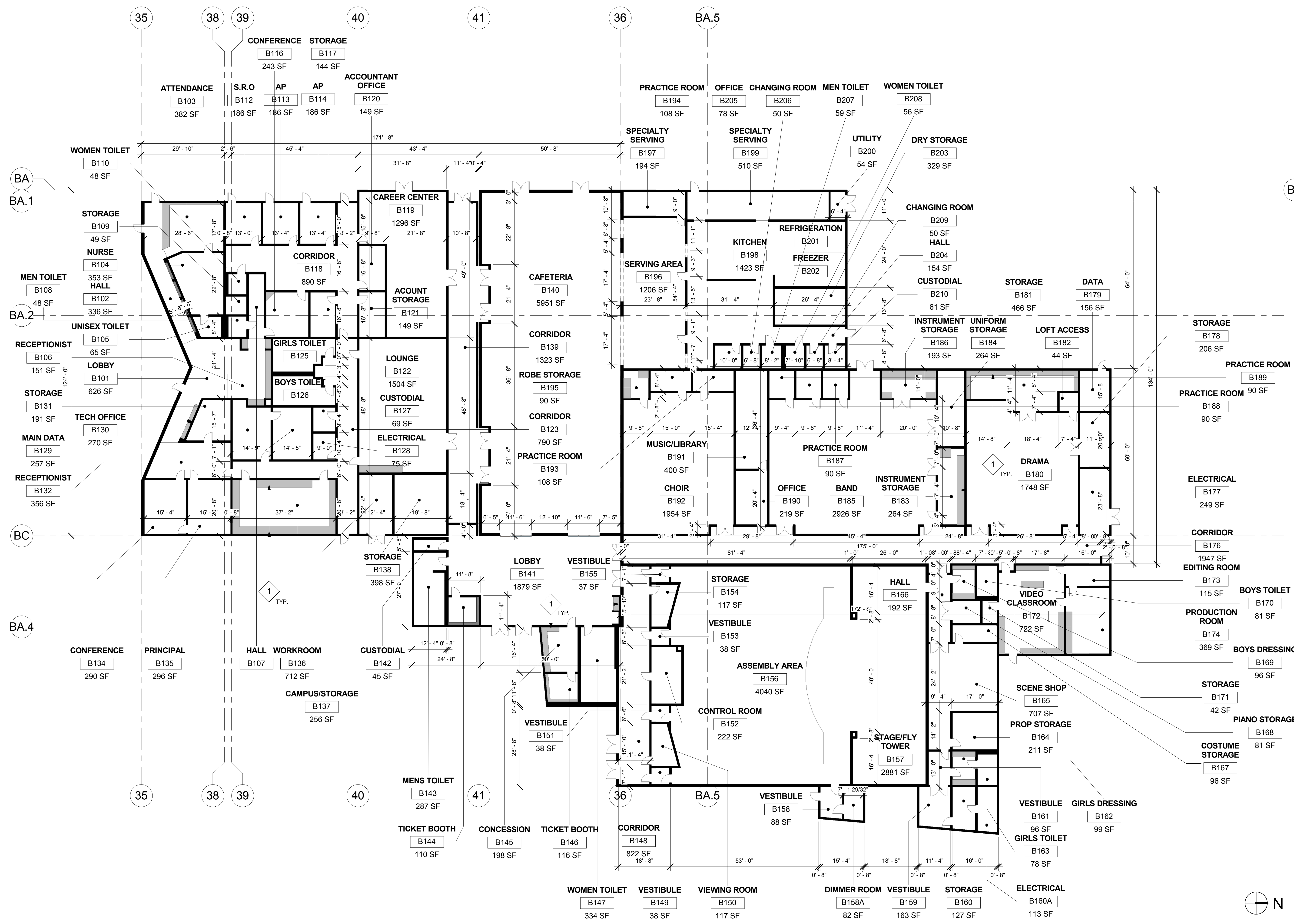
PRINTED: 4/27/2017 10:22:37 AM

BUILDING A (KENNEDY)
 FLOOR PLAN & SCHEDULE

HERITAGE HIGH SCHOOL FLOOR
 REPLACEMENT

PERRIS UNION HIGH SCHOOL DISTRICT
 Orange County Office: Address: 24461 Ridge Route Drive #100, Laguna Hills, CA 92653
 Phone: 949.496.6191, Fax: 949.496.0269

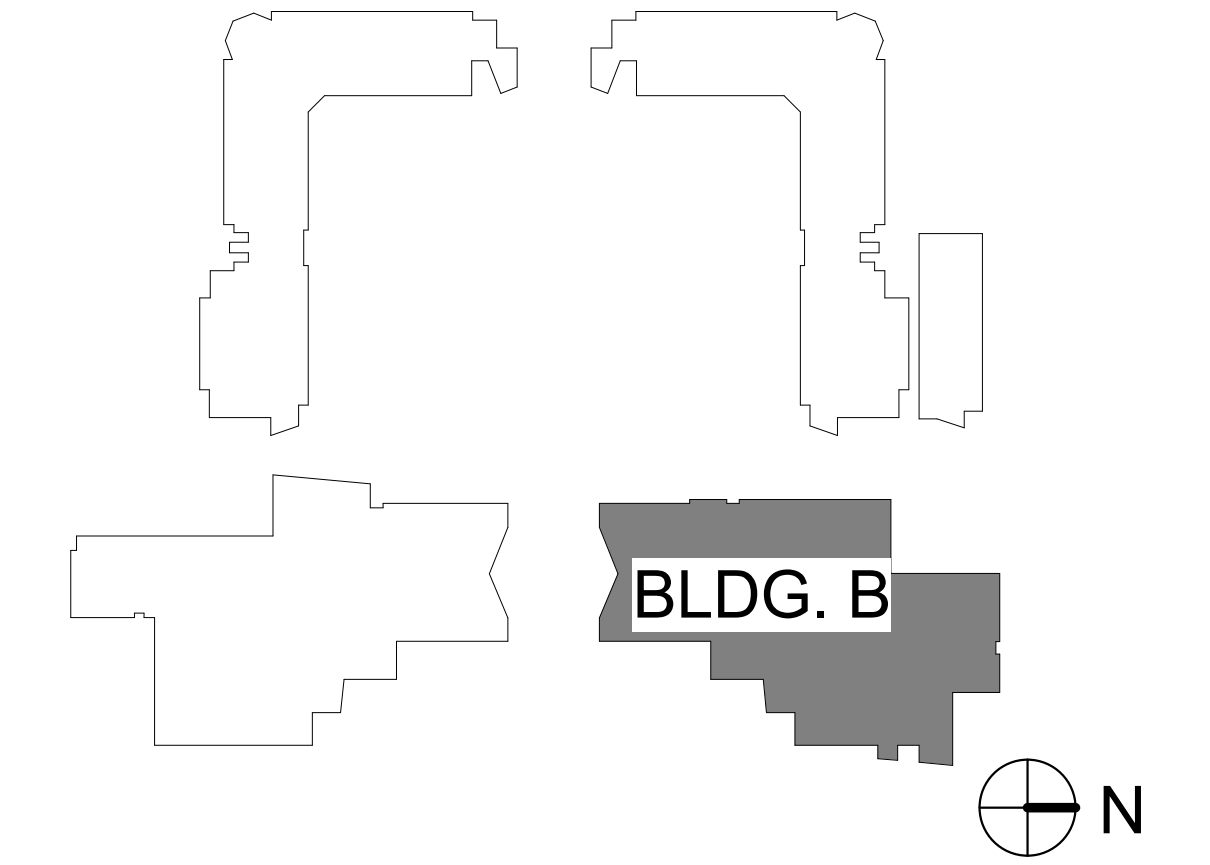




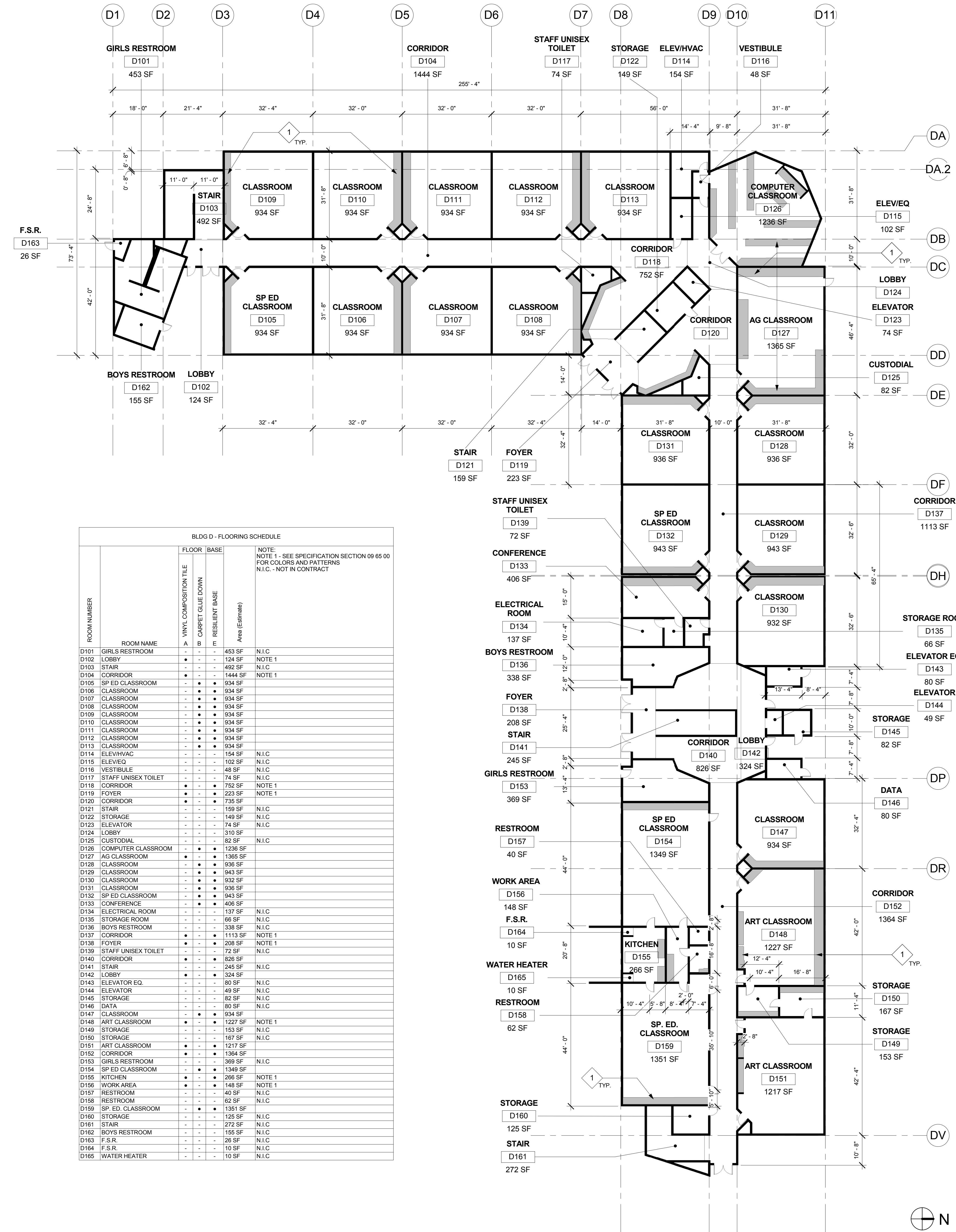
BUILDING B - REAGON - FIRST LEVEL
 FLOOR PLAN
 1/16" = 1'-0"

KEYNOTES:
 (1) SHADING INDICATES EXTENT OF EXISTING CASEWORK. IF EXISTING CASEWORK HAS A RAISED TOE SPACE (APPROX. 3 TO 4 INCHES) FACE OF TOE KICK AND NEWLY INSTALLED TOP-SET BASE IS TO BE DRILLED WITH 1/2 INCHES DIA. HOLES AT 24 INCHES ON CENTER MID-HEIGHT OF TOE KICK FOR VENTILATION PURPOSES. FINISH NEW VENTILATION HOLES WITH A BLACK PLASTIC GROMMET ADHERED INTO PLACE(TYP.)

| ROOM NUMBER | ROOM NAME | BLDG B - FLOORING SCHEDULE | | | NOTE |
|-------------|--------------------|----------------------------|------|-----------------|--------|
| | | FLOOR | BASE | AREA (Estimate) | |
| B101 | LOBBY | • | • | 626 SF | NOTE 1 |
| B102 | HALL | • | • | 336 SF | NOTE 1 |
| B103 | ATTENDANCE | • | • | 382 SF | NOTE 1 |
| B104 | NURSE | • | • | 353 SF | NOTE 1 |
| B105 | UNISEX TOILET | • | • | 65 SF | N.I.C. |
| B106 | RECEPTIONIST | • | • | 151 SF | NOTE 1 |
| B107 | HALL | • | • | 130 SF | NOTE 1 |
| B108 | MEN TOILET | • | • | 48 SF | N.I.C. |
| B109 | STORAGE | • | • | 49 SF | N.I.C. |
| B110 | WOMEN TOILET | • | • | 48 SF | N.I.C. |
| B112 | S.R.O | • | • | 186 SF | NOTE 1 |
| B113 | AP | • | • | 186 SF | NOTE 1 |
| B114 | AP | • | • | 186 SF | NOTE 1 |
| B116 | CONFERENCE | • | • | 243 SF | NOTE 1 |
| B117 | STORAGE | • | • | 144 SF | NOTE 1 |
| B118 | CORRIDOR | • | • | 890 SF | NOTE 1 |
| B119 | CAREER CENTER | • | • | 1296 SF | NOTE 1 |
| B120 | ACCOUNTANT OFFICE | • | • | 149 SF | NOTE 1 |
| B121 | ACCOUNT STORAGE | • | • | 149 SF | NOTE 1 |
| B122 | LOUNGE | • | • | 1504 SF | NOTE 1 |
| B123 | CORRIDOR | • | • | 790 SF | NOTE 1 |
| B125 | GIRLS TOILET | • | • | 227 SF | NOTE 1 |
| B126 | BOYS TOILET | • | • | 216 SF | N.I.C. |
| B127 | CUSTODIAL | • | • | 69 SF | NOTE 1 |
| B128 | ELECTRICAL | • | • | 75 SF | N.I.C. |
| B129 | MAIN DATA | • | • | 270 SF | N.I.C. |
| B130 | TECH OFFICE | • | • | 270 SF | N.I.C. |
| B131 | STORAGE | • | • | 191 SF | NOTE 1 |
| B132 | RECEPTIONIST | • | • | 356 SF | NOTE 1 |
| B133 | RECEPTIONIST | • | • | 65 SF | NOTE 1 |
| B134 | CONFERENCE | • | • | 296 SF | NOTE 1 |
| B135 | PRINCIPAL | • | • | 296 SF | NOTE 1 |
| B136 | WORKROOM | • | • | 712 SF | NOTE 1 |
| B137 | CAMPUS STORAGE | • | • | 256 SF | N.I.C. |
| B138 | CORRIDOR | • | • | 1323 SF | N.I.C. |
| B139 | CORRIDOR | • | • | 1323 SF | NOTE 1 |
| B140 | CAFETERIA | • | • | 5951 SF | NOTE 1 |
| B141 | LOBBY | • | • | 1879 SF | NOTE 1 |
| B142 | CUSTODIAL | • | • | 45 SF | N.I.C. |
| B143 | MENS TOILET | • | • | 287 SF | N.I.C. |
| B144 | TICKET BOOTH | • | • | 110 SF | NOTE 1 |
| B145 | CONCESSION | • | • | 198 SF | NOTE 1 |
| B146 | TICKET BOOTH | • | • | 116 SF | NOTE 1 |
| B147 | WOMEN TOILET | • | • | 334 SF | N.I.C. |
| B148 | CORRIDOR | • | • | 822 SF | N.I.C. |
| B149 | VESTIBULE | • | • | 38 SF | N.I.C. |
| B150 | VIEWING ROOM | • | • | 117 SF | N.I.C. |
| B151 | VESTIBULE | • | • | 38 SF | NOTE 1 |
| B152 | CONTROL ROOM | • | • | 222 SF | NOTE 1 |
| B153 | VESTIBULE | • | • | 38 SF | NOTE 1 |
| B154 | STORAGE | • | • | 117 SF | NOTE 1 |
| B155 | VESTIBULE | • | • | 37 SF | NOTE 1 |
| B156 | ASSEMBLY AREA | • | • | 4040 SF | NOTE 1 |
| B157 | STAGE/FLY TOWER | • | • | 2881 SF | NOTE 1 |
| B158 | VESTIBULE | • | • | 88 SF | NOTE 1 |
| B159 | VESTIBULE | • | • | 163 SF | NOTE 1 |
| B160 | STORAGE | • | • | 127 SF | NOTE 1 |
| B161 | VESTIBULE | • | • | 96 SF | NOTE 1 |
| B162 | GIRLS DRESSING | • | • | 99 SF | NOTE 1 |
| B163 | GIRLS TOILET | • | • | 78 SF | NOTE 1 |
| B164 | PROP STORAGE | • | • | 211 SF | NOTE 1 |
| B165 | SCENE SHOP | • | • | 707 SF | NOTE 1 |
| B166 | HALL | • | • | 192 SF | NOTE 1 |
| B167 | COSTUME STORAGE | • | • | 96 SF | NOTE 1 |
| B168 | PIANO STORAGE | • | • | 81 SF | NOTE 1 |
| B169 | BOYS DRESSING | • | • | 96 SF | NOTE 1 |
| B170 | BOYS TOILET | • | • | 81 SF | N.I.C. |
| B171 | STORAGE | • | • | 42 SF | N.I.C. |
| B172 | VIDEO CLASSROOM | • | • | 722 SF | NOTE 1 |
| B173 | EDITING ROOM | • | • | 115 SF | NOTE 1 |
| B174 | PRODUCTION ROOM | • | • | 369 SF | NOTE 1 |
| B175 | CORRIDOR | • | • | 1947 SF | NOTE 1 |
| B176 | ELECTRICAL | • | • | 249 SF | N.I.C. |
| B177 | STORAGE | • | • | 206 SF | N.I.C. |
| B178 | STORAGE | • | • | 156 SF | N.I.C. |
| B179 | DATA | • | • | 156 SF | N.I.C. |
| B180 | DRAMA | • | • | 1748 SF | NOTE 1 |
| B181 | STORAGE | • | • | 466 SF | NOTE 1 |
| B182 | LOFT ACCESS | • | • | 44 SF | NOTE 1 |
| B183 | INSTRUMENT STORAGE | • | • | 264 SF | NOTE 1 |
| B184 | UNIFORM STORAGE | • | • | 264 SF | NOTE 1 |
| B185 | BAND | • | • | 2926 SF | NOTE 1 |
| B186 | INSTRUMENT STORAGE | • | • | 193 SF | NOTE 1 |
| B187 | PRACTICE ROOM | • | • | 90 SF | NOTE 1 |
| B188 | PRACTICE ROOM | • | • | 90 SF | NOTE 1 |
| B189 | PRACTICE ROOM | • | • | 90 SF | NOTE 1 |
| B190 | OFFICE | • | • | 219 SF | NOTE 1 |
| B191 | MUSIC/LIBRARY | • | • | 400 SF | NOTE 1 |
| B192 | CHOIR | • | • | 1954 SF | NOTE 1 |
| B193 | PRACTICE ROOM | • | • | 108 SF | NOTE 1 |
| B194 | PRACTICE ROOM | • | • | 108 SF | NOTE 1 |
| B195 | ROBE STORAGE | • | • | 90 SF | NOTE 1 |
| B196 | SERVING AREA | • | • | 1206 SF | NOTE 1 |
| B197 | SPECIALTY SERVING | • | • | 194 SF | NOTE 1 |
| B198 | KITCHEN | • | • | 1423 SF | NOTE 1 |
| B199 | SPECIALTY SERVING | • | • | 510 SF | NOTE 1 |
| B200 | UTILITY | • | • | 54 SF | NOTE 1 |
| B201 | REFRIGERATION | • | • | 50 SF | NOTE 1 |
| B202 | FREEZER | • | • | 50 SF | NOTE 1 |
| B203 | DRY STORAGE | • | • | 329 SF | NOTE 1 |
| B204 | HALL | • | • | 154 SF | NOTE 1 |
| B205 | OFFICE | • | • | 78 SF | NOTE 1 |
| B206 | CHANGING ROOM | • | • | 50 SF | NOTE 1 |
| B207 | MEN TOILET | • | • | 59 SF | NOTE 1 |
| B208 | WOMEN TOILET | • | • | 56 SF | NOTE 1 |
| B209 | CHANGING ROOM | • | • | 50 SF | NOTE 1 |
| B210 | CUSTODIAL | • | • | 61 SF | NOTE 1 |
| B211 | STORAGE | • | • | 466 SF | NOTE 1 |
| B212 | LOUNGE | • | • | 1504 SF | NOTE 1 |
| B213 | AP | • | • | 186 SF | NOTE 1 |
| B214 | AP | • | • | 186 SF | NOTE 1 |
| B215 | PRINCIPAL | • | • | 296 SF | NOTE 1 |
| B216 | BOYS TOILET | • | • | 216 SF | N.I.C. |
| B217 | CUSTODIAL | • | • | 69 SF | NOTE 1 |
| B218 | ELECTRICAL | • | • | 75 SF | N.I.C. |
| B219 | MAIN DATA | • | • | 270 SF | N.I.C. |
| B220 | UTILITY | • | • | 54 SF | N.I.C. |
| B221 | REFRIGERATION | • | • | 232 SF | N.I.C. |
| B222 | FREEZER | • | • | 315 SF | N.I.C. |
| B223 | DRY STORAGE | • | • | 329 SF | N.I.C. |
| B224 | HALL | • | • | 154 SF | N.I.C. |
| B225 | OFFICE | • | • | 78 SF | N.I.C. |
| B226 | CHANGING ROOM | • | • | 50 SF | N.I.C. |
| B227 | MEN TOILET | • | • | 59 SF | N.I.C. |
| B228 | WOMEN TOILET | • | • | 56 SF | N.I.C. |
| B229 | CHANGING ROOM | • | • | 50 SF | N.I.C. |
| B230 | CUSTODIAL | • | • | 61 SF | N.I.C. |

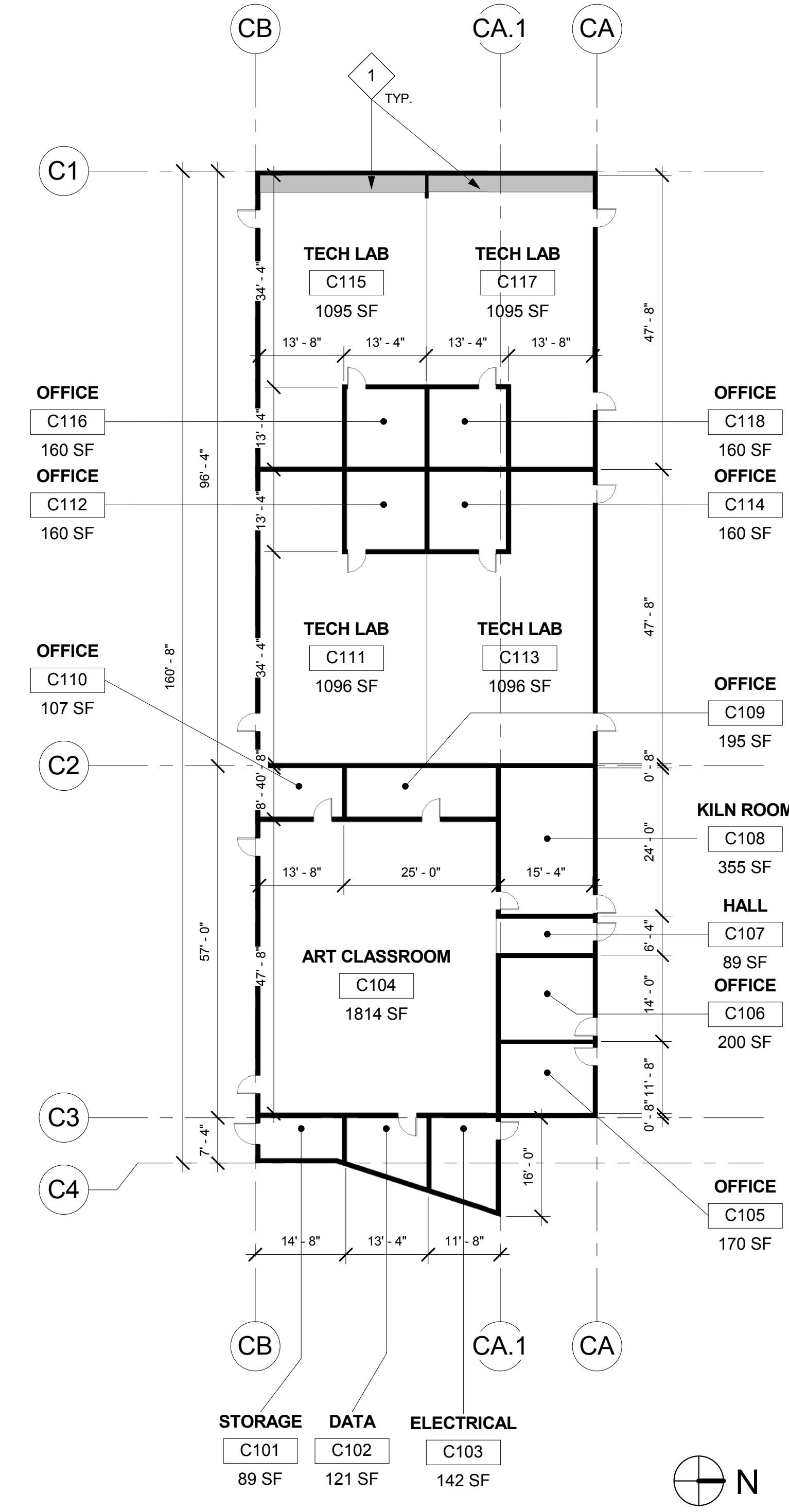


KEYPLAN B



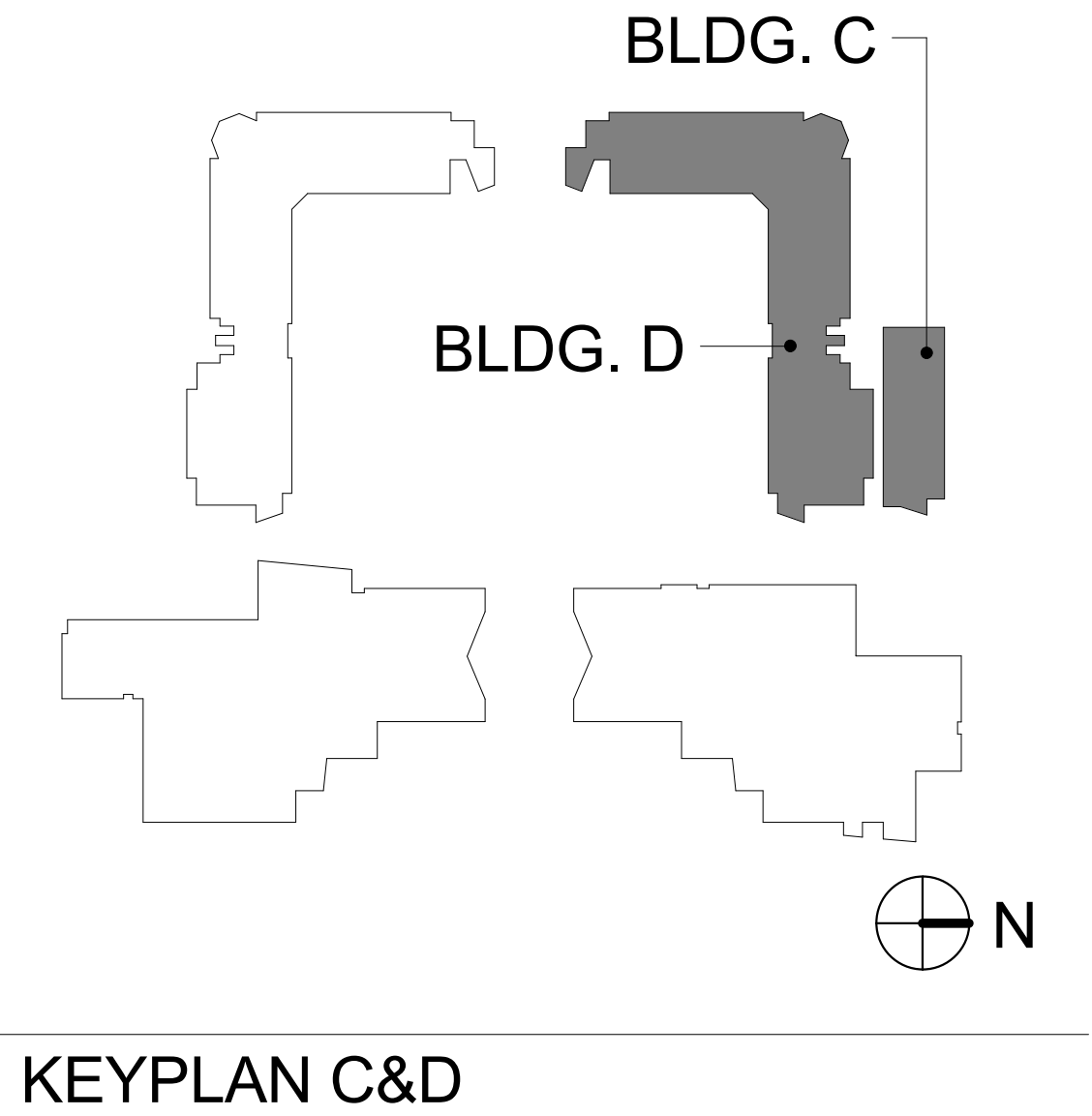
| BLDG D - FLOORING SCHEDULE | | | | | | |
|----------------------------|---------------------|--------------------------|--------------------|------------------|--------|-----------------|
| ROOM NUMBER | ROOM NAME | FLOOR BASE | | | NOTE | Area (Estimate) |
| | | A VINYL COMPOSITION TILE | B CARPET GLUE DOWN | C RESILIENT BASE | | |
| D101 | GIRLS RESTROOM | - | - | - | N.I.C. | 453 SF |
| D102 | LOBBY | - | - | - | NOTE 1 | 124 SF |
| D103 | STAIR | - | - | - | N.I.C. | 492 SF |
| D104 | CORRIDOR | - | - | - | NOTE 1 | 1444 SF |
| D105 | SP ED CLASSROOM | - | - | - | N.I.C. | 934 SF |
| D106 | CLASSROOM | - | - | - | N.I.C. | 934 SF |
| D107 | CLASSROOM | - | - | - | N.I.C. | 934 SF |
| D108 | CLASSROOM | - | - | - | N.I.C. | 934 SF |
| D109 | CLASSROOM | - | - | - | N.I.C. | 934 SF |
| D110 | CLASSROOM | - | - | - | N.I.C. | 934 SF |
| D111 | CLASSROOM | - | - | - | N.I.C. | 934 SF |
| D112 | CLASSROOM | - | - | - | N.I.C. | 934 SF |
| D113 | CLASSROOM | - | - | - | N.I.C. | 934 SF |
| D114 | ELEV/HVAC | - | - | - | N.I.C. | 154 SF |
| D115 | ELEV/EG | - | - | - | N.I.C. | 102 SF |
| D116 | VESTIBULE | - | - | - | N.I.C. | 48 SF |
| D117 | STAFF UNISEX TOILET | - | - | - | N.I.C. | 74 SF |
| D118 | CORRIDOR | - | - | - | NOTE 1 | 752 SF |
| D119 | FOYER | - | - | - | NOTE 1 | 223 SF |
| D120 | CORRIDOR | - | - | - | NOTE 1 | 735 SF |
| D121 | STAIR | - | - | - | N.I.C. | 159 SF |
| D122 | STORAGE | - | - | - | N.I.C. | 149 SF |
| D123 | ELEVATOR | - | - | - | N.I.C. | 74 SF |
| D124 | LOBBY | - | - | - | N.I.C. | 310 SF |
| D125 | CUSTODIAL | - | - | - | N.I.C. | 82 SF |
| D126 | COMPUTER CLASSROOM | - | - | - | N.I.C. | 1236 SF |
| D127 | AG CLASSROOM | - | - | - | N.I.C. | 1365 SF |
| D128 | CLASSROOM | - | - | - | N.I.C. | 936 SF |
| D129 | CLASSROOM | - | - | - | N.I.C. | 943 SF |
| D130 | CLASSROOM | - | - | - | N.I.C. | 932 SF |
| D131 | CLASSROOM | - | - | - | N.I.C. | 936 SF |
| D132 | SP ED CLASSROOM | - | - | - | N.I.C. | 943 SF |
| D133 | CONFERENCE | - | - | - | N.I.C. | 406 SF |
| D134 | ELECTRICAL ROOM | - | - | - | N.I.C. | 137 SF |
| D135 | STORAGE ROOM | - | - | - | N.I.C. | 66 SF |
| D136 | BOYS RESTROOM | - | - | - | N.I.C. | 338 SF |
| D137 | CORRIDOR | - | - | - | NOTE 1 | 1113 SF |
| D138 | FOYER | - | - | - | NOTE 1 | 208 SF |
| D139 | STAFF UNISEX TOILET | - | - | - | N.I.C. | 72 SF |
| D140 | CORRIDOR | - | - | - | N.I.C. | 826 SF |
| D141 | STAIR | - | - | - | N.I.C. | 245 SF |
| D142 | LOBBY | - | - | - | N.I.C. | 324 SF |
| D143 | ELEVATOR EQ. | - | - | - | N.I.C. | 80 SF |
| D144 | ELEVATOR | - | - | - | N.I.C. | 49 SF |
| D145 | STORAGE | - | - | - | N.I.C. | 82 SF |
| D146 | DATA | - | - | - | N.I.C. | 80 SF |
| D147 | CLASSROOM | - | - | - | N.I.C. | 934 SF |
| D148 | ART CLASSROOM | - | - | - | NOTE 1 | 1227 SF |
| D149 | STORAGE | - | - | - | N.I.C. | 167 SF |
| D150 | STORAGE | - | - | - | N.I.C. | 167 SF |
| D151 | ART CLASSROOM | - | - | - | NOTE 1 | 1217 SF |
| D152 | CORRIDOR | - | - | - | N.I.C. | 1364 SF |
| D153 | GIRLS RESTROOM | - | - | - | N.I.C. | 369 SF |
| D154 | SP ED CLASSROOM | - | - | - | N.I.C. | 1349 SF |
| D155 | KITCHEN | - | - | - | NOTE 1 | 266 SF |
| D156 | WORK AREA | - | - | - | NOTE 1 | 148 SF |
| D157 | RESTROOM | - | - | - | N.I.C. | 40 SF |
| D158 | RESTROOM | - | - | - | N.I.C. | 62 SF |
| D159 | SP. ED. CLASSROOM | - | - | - | N.I.C. | 1351 SF |
| D160 | STORAGE | - | - | - | N.I.C. | 125 SF |
| D161 | STAIR | - | - | - | N.I.C. | 272 SF |
| D162 | BOYS RESTROOM | - | - | - | N.I.C. | 155 SF |
| D163 | F.S.R. | - | - | - | N.I.C. | 26 SF |
| D164 | F.S.R. | - | - | - | N.I.C. | 10 SF |
| D165 | WATER HEATER | - | - | - | N.I.C. | 10 SF |

1 BUILDING D - WASHINGTON - FIRST LEVEL FLOOR PLAN
1/16" = 1'-0"



2 BUILDING C - JEFFERSON - FIRST LEVEL FLOOR PLAN
1/16" = 1'-0"

| BLDG C - FLOORING SCHEDULE | | | | | | |
|----------------------------|---------------|--------------------------|--------------------|------------------|--------|-----------------|
| ROOM NUMBER | ROOM NAME | FLOOR BASE | | | NOTE | Area (Estimate) |
| | | A VINYL COMPOSITION TILE | B CARPET GLUE DOWN | C RESILIENT BASE | | |
| C101 | STORAGE | - | - | - | N.I.C. | 89 SF |
| C102 | DATA | - | - | - | N.I.C. | 121 SF |
| C103 | ELECTRICAL | - | - | - | N.I.C. | 142 SF |
| C104 | ART CLASSROOM | - | - | - | N.I.C. | 1814 SF |
| C105 | OFFICE | - | - | - | N.I.C. | 170 SF |
| C106 | OFFICE | - | - | - | N.I.C. | 200 SF |
| C107 | HALL | - | - | - | N.I.C. | 89 SF |
| C108 | KILN ROOM | - | - | - | N.I.C. | 355 SF |
| C109 | OFFICE | - | - | - | N.I.C. | 195 SF |
| C110 | OFFICE | - | - | - | N.I.C. | 107 SF |
| C111 | TECH LAB | - | - | - | N.I.C. | 1096 SF |
| C112 | OFFICE | - | - | - | N.I.C. | 160 SF |
| C113 | TECH LAB | - | - | - | N.I.C. | 1096 SF |
| C114 | OFFICE | - | - | - | N.I.C. | 160 SF |
| C115 | TECH LAB | - | - | - | NOTE 1 | 1095 SF |
| C116 | OFFICE | - | - | - | N.I.C. | 160 SF |
| C117 | TECH LAB | - | - | - | NOTE 1 | 1095 SF |
| C118 | OFFICE | - | - | - | N.I.C. | 160 SF |

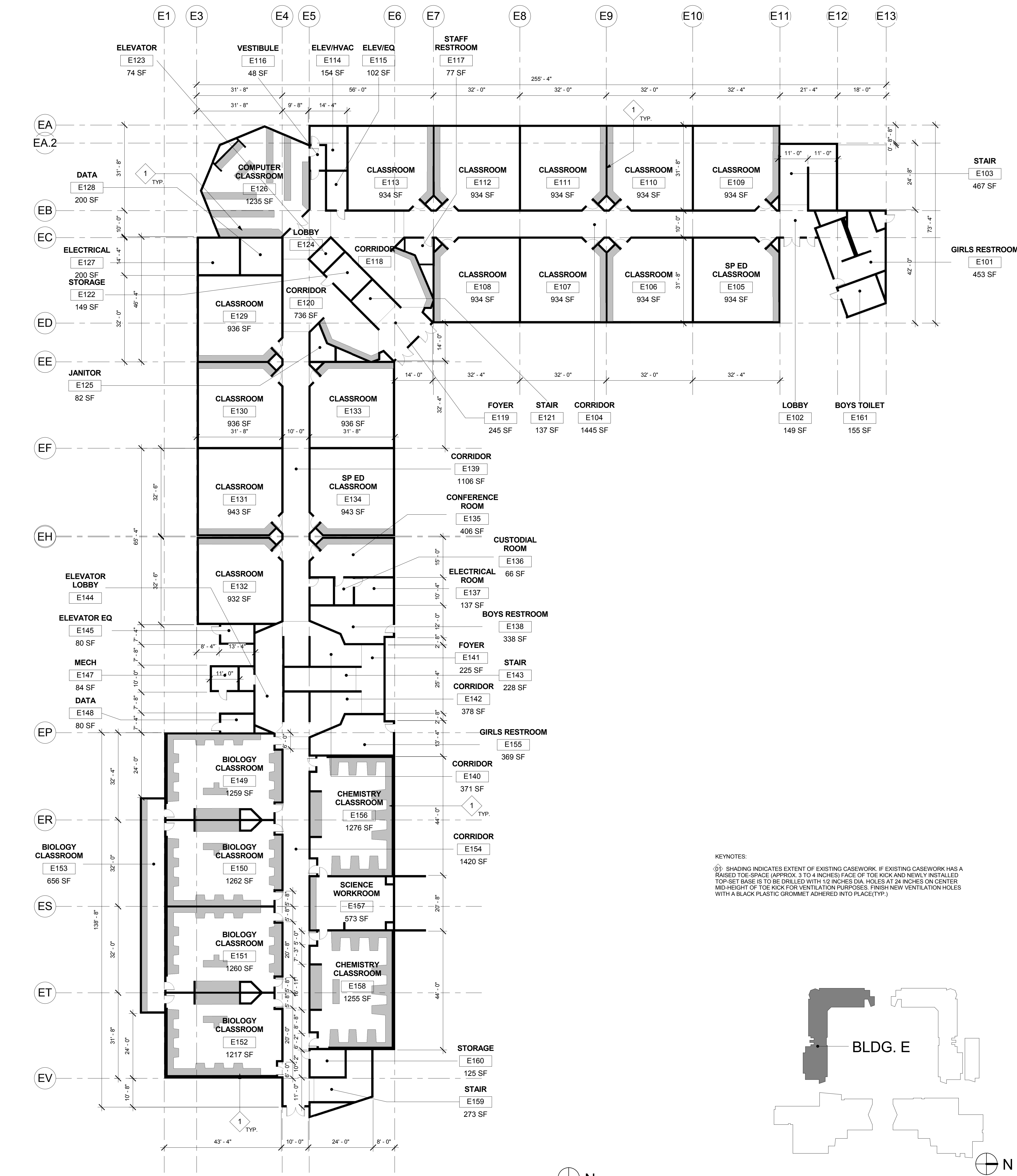


KEYPLAN C&D



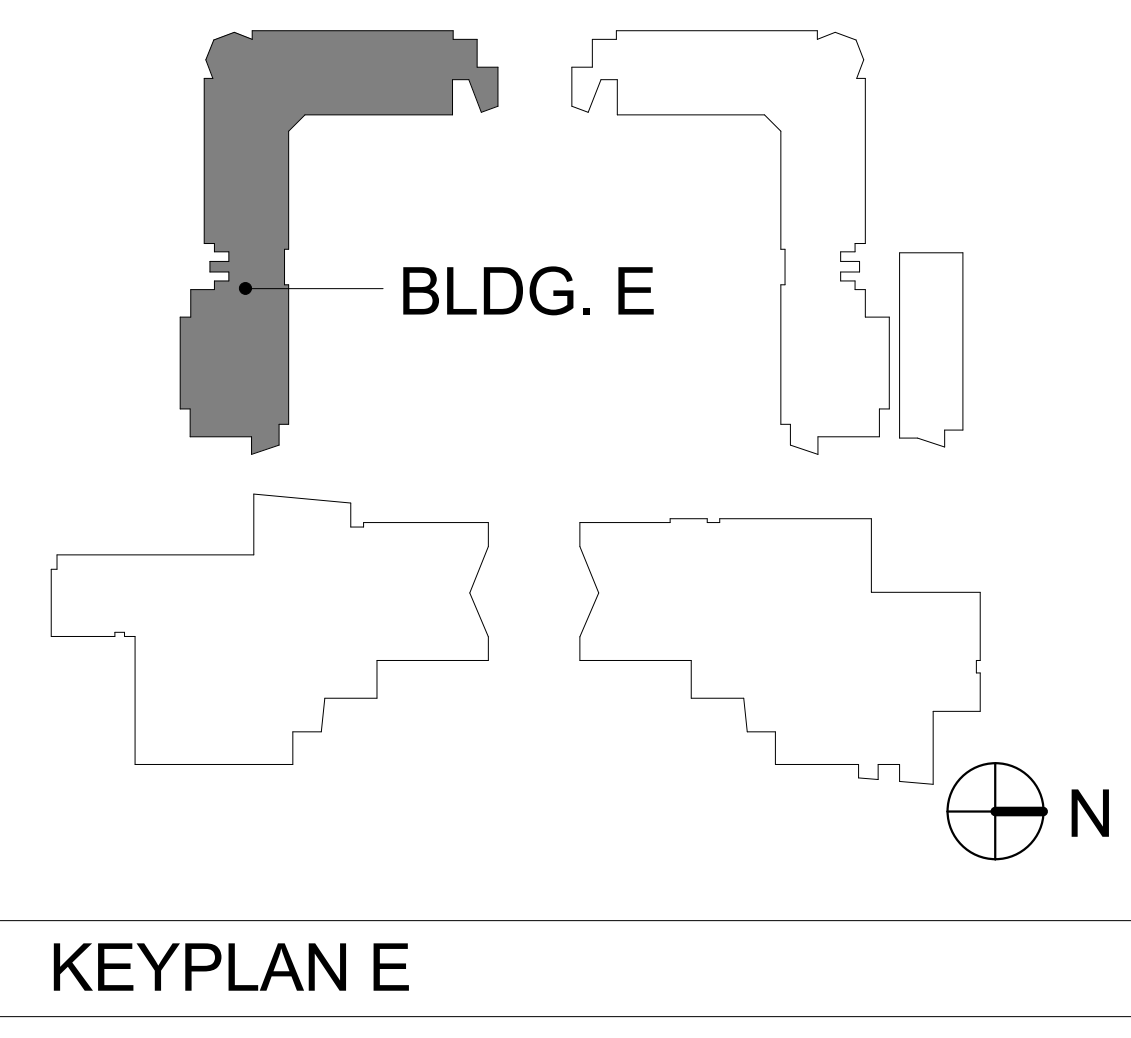
Orange County Office: Address: 24461 Ridge Route Drive #100, Laguna Hills, CA 92653
 San Diego Office: Address: 804 Pier View Way #103, Oceanside, CA 92054
 Phone: 949.496.6191, Fax: 949.496.0269

| BLDG E - FLOORING SCHEDULE | | | | | |
|----------------------------|---------------------|------------------------|-----------------|----------------|-----------------|
| ROOM NUMBER | ROOM NAME | FLOOR | | NOTE | |
| | | BASE | FINISH | | |
| | | VINYL COMPOSITION TILE | CARPET GLUEDOWN | RESILIENT BASE | Area (Estimate) |
| | | A | B | E | |
| E101 | GIRLS RESTROOM | - | - | - | 483 SF |
| E102 | LOBBY | - | - | - | 149 SF |
| E103 | STAIR | - | - | - | 467 SF |
| E104 | CORRIDOR | - | - | - | 1445 SF |
| E105 | SP ED CLASSROOM | - | - | - | 934 SF |
| E106 | CLASSROOM | - | - | - | 934 SF |
| E107 | CLASSROOM | - | - | - | 934 SF |
| E108 | CLASSROOM | - | - | - | 934 SF |
| E109 | CLASSROOM | - | - | - | 934 SF |
| E110 | CLASSROOM | - | - | - | 934 SF |
| E111 | CLASSROOM | - | - | - | 934 SF |
| E112 | CLASSROOM | - | - | - | 934 SF |
| E113 | CLASSROOM | - | - | - | 934 SF |
| E114 | ELEVHVAC | - | - | - | 154 SF |
| E115 | ELEV/EQ | - | - | - | 102 SF |
| E116 | VESTIBULE | - | - | - | 48 SF |
| E117 | STAFF RESTROOM | - | - | - | 77 SF |
| E118 | CORRIDOR | - | - | - | 751 SF |
| E119 | FOYER | - | - | - | 245 SF |
| E120 | CORRIDOR | - | - | - | 736 SF |
| E121 | STAIR | - | - | - | 137 SF |
| E122 | STORAGE | - | - | - | 149 SF |
| E123 | ELEVATOR | - | - | - | 74 SF |
| E124 | LOBBY | - | - | - | 310 SF |
| E125 | JANITOR | - | - | - | 82 SF |
| E126 | COMPUTER CLASSROOM | - | - | - | 1235 SF |
| E127 | ELECTRICAL | - | - | - | 200 SF |
| E128 | DATA | - | - | - | 200 SF |
| E129 | CLASSROOM | - | - | - | 936 SF |
| E130 | CLASSROOM | - | - | - | 936 SF |
| E131 | CLASSROOM | - | - | - | 943 SF |
| E132 | CLASSROOM | - | - | - | 932 SF |
| E133 | CLASSROOM | - | - | - | 936 SF |
| E134 | SP ED CLASSROOM | - | - | - | 943 SF |
| E135 | CONFERENCE ROOM | - | - | - | 406 SF |
| E136 | CUSTODIAL ROOM | - | - | - | 66 SF |
| E137 | ELECTRICAL ROOM | - | - | - | 137 SF |
| E138 | BOYS RESTROOM | - | - | - | 338 SF |
| E139 | CORRIDOR | - | - | - | 1106 SF |
| E140 | CORRIDOR | - | - | - | 371 SF |
| E141 | FOYER | - | - | - | 225 SF |
| E142 | CORRIDOR | - | - | - | 378 SF |
| E143 | STAIR | - | - | - | 228 SF |
| E144 | ELEVATOR LOBBY | - | - | - | 375 SF |
| E145 | ELEVATOR EQ | - | - | - | 80 SF |
| E146 | ELEVATOR | - | - | - | 47 SF |
| E147 | MECH | - | - | - | 84 SF |
| E148 | DATA | - | - | - | 80 SF |
| E149 | BIOLOGY CLASSROOM | - | - | - | 1259 SF |
| E150 | BIOLOGY CLASSROOM | - | - | - | 1262 SF |
| E151 | BIOLOGY CLASSROOM | - | - | - | 1260 SF |
| E152 | BIOLOGY CLASSROOM | - | - | - | 1217 SF |
| E153 | BIOLOGY CLASSROOM | - | - | - | 1276 SF |
| E154 | CORRIDOR | - | - | - | 1420 SF |
| E155 | GIRLS RESTROOM | - | - | - | 369 SF |
| E156 | CHEMISTRY CLASSROOM | - | - | - | 1276 SF |
| E157 | SCIENCE WORKROOM | - | - | - | 573 SF |
| E158 | CHEMISTRY CLASSROOM | - | - | - | 1255 SF |
| E159 | STAIR | - | - | - | 273 SF |
| E160 | STORAGE | - | - | - | 125 SF |
| E161 | BOYS TOILET | - | - | - | 155 SF |



BUILDING E - LINCOLN - FIRST LEVEL
FLOOR PLAN
1/16" = 1'-0"

KEYNOTES:
 (1) SHADING INDICATES EXTENT OF EXISTING CASEWORK. IF EXISTING CASEWORK HAS A RAISED TOE SPACE (APPROX. 3 TO 4 INCHES) FACE OF THE KICK AND NEWLY INSTALLED TOP-SET BASE IS TO BE DRILLED WITH 1/2 INCHES DIA. HOLES AT 24 INCHES ON CENTER MID-HEIGHT OF TOE KICK FOR VENTILATION PURPOSES. FINISH NEW VENTILATION HOLES WITH A BLACK PLASTIC GROMMET ADHERED INTO PLACE(TYP.)



BUILDING E (LINCOLN)
FLOOR PLAN & SCHEDULE

